

## *3D Dynamic Co2 Laser Marking Machine*

*——MY-C6060M*



## 3D Dynamic Co2 Laser Marking Machine

### Description

CO2 Dynamic Laser Marking Machine adopts imported laser tube and high speed galvo scanner, Wisely Laser self-developed linear 3D Dynamic Focusing System, device control system, advanced Control software and the high precision thermostatic water cooling system.

The machine adopts the 10.64um CO2 laser source, which can satisfy the application in different industries such as marking, cutting, engraving, color removal, paint processing, material micro-processing and etc. The equipment adopts Aluminum frame structure, and the latest motor driving in the whole worktable platform to ensure the stable qualities. The adjustment of laser optical path is driven by two galvanometer motors(XY), and the third axis is driven by pre-scanning gathered system to make a wildly adjustment for focus distance.

### Feature

- 1) This machine adopts 3D Dynamic Galvanometer Control System. Original Imported 180W/275W metal RF laser tube. Laser power supply and cutting speed can be adjustable, maximally energy saving.
- 2) Fully enclosed laser optical system, no adjustment or maintenance needed, can be used directly after installation.
- 3) Original imported metal RF laser tube with high laser power, excellent laser spot, stable laser generation and lifetime of more than 20000hrs, gas inside the tube can be refilled again.
- 4) American CTI 3D dynamic scan head, one time scan area could reach to 1500\*1500mm. 3D dynamic galvanometer control system and automatic up & down Z axis ensure the best processing results.
- 5) Large-scale marking engraving cutting dotting and hollowing on leather, shoe, denim, jeans, textile, fabric, invitation paper card, wood, MDF, acrylic, marble and more flexible materials.
- 6) Equipped with foot switch - easy operation. Back and bottom exhaust fans ensure good exhaust suction effects and environment friendly processing.
- 7) High precision and speed performance with cutting&engraving working, 20% higher efficiency than the similar models in the market.
- 8) Professional industrial thermostatic circulation of water cooling system ensures more stable running and lower consumption.
- 9) Strict multiply protection control system can be applied in wild operation temperature, to make sure the stable continuous working of 24h of laser marking system.
- 10) With Wisely Laser software, various formats are supported according to your requirements. Application under Windows interface, AutoCAD, CorelDraw, PhotoShop compatible, PLT, DXF, BMP, AI supportive.
- 11) Especially applies RBI marking with light guild plate or acrylic, and cutting&engraving with leathers, jeans, textile, wood, MDF, acrylic.

### Advantage of CO2 Dynamic Laser Marking Machine

- 1) **Permanent:** Mark will not subside because of environmental reasons (touch, acidic or reducing gas, high or low temperature etc).
- 2) **Non-contact:** Laser marking is a non-mechanical "light knife" for processing, the workpiece will not produce stress after marking. The working surface will not produce corrosion, no "tool" worn, non-toxic, non-polluting.
- 3) **Wide application:** CO2 Dynamic Laser Marking can work on all non-metal materials (Textile, Leather, PMMA, Wood, MDF, Paper, Marble, etc.)
- 4) **High precision for engraving & marking:** CO2 Dynamic Laser Marking Machine can engrave fine pattern, the minimum line width can reach to 0.04mm Engraving&Marking result is clear, durable and beautiful.
- 5) **Low operating costs:** Low energy consumption, no consumptive materials, and therefore lower operating costs.
- 6) **High efficiency:** CO2 Dynamic Laser Marking Machine's Engraving&Marking speed can reach to 7-10m/s, three times than that of traditional laser marking machine, marking process can be completed in seconds.
- 7) **Large marking area:** With the high power laser tube and the 3D Scanner technology, the CO2 Dynamic Laser Marking Machine can work on large size materials such as the clothes processing, leather processing, LGP(Light Guide Plate for LED Panel Light and TV) processing.
- 8) **Easy development:** Due to the combination of laser technology and computer technology, the laser print can be realized by the order from the computer program, and may change the print design at any time, replaces the traditional mold marking process from the fundamental, shorten the product upgrade cycle and provide a convenient tool for flexible production.

### Application

Invitation&Greeting Paper Card Processing, Wood Product Laser Processing, Leather Laser Processing, Shoes & Insole Laser Processing, Jeans Laser Processing, Marble Laser Processing, LGP Laser Dotting Processing for LED Panel Light and TV LCD



深圳市威斯利激光设备有限公司  
SHENZHEN WISELY LASER MACHINERY CO., LIMITED  
#10 BUILDING, #4 INDUSTRY ZONE HESHUIKOU,  
MATIAN, GUANGMING DISTRICT, SHENZHEN 518106 CHINA  
M: +86-150-13509330 E: sales@wwlaser.com W: www.wiselylaser.com  
智·信·銳意·敢擔當 — 威斯利激光

## Parameter

Model	MY-C6060M
Power	100-130W / 200-250w
Marking Area	600*600mm
Optional Marking Area	800*600mm
Marking Depth	≤5mm Acrylic
Marking Speed	≤7000mm/s
Power Consumption	≤ 5 KWH
Worktable	Marble Worktable/Aluminum Honeycomb Worktable
Laser Wavelength	10.6um
Laser Source	US Coherent CO2 metal RF Laser Tube
Laser Frequency	20kHz~200kHz
Scan Head	CTI America
Repetition Precision	0.01mm
Min.Letter Size	0.3mm
Output Compatibility	Dynamic Mark / Static Mark
System Operation Environment	Windows XP / 7 / 8 / 10 / 11-32 / 64bits
Output Compatibility	AutoCAD, PhotoShop, CorelDRAW etc.
File Formats	PLT, DXP, BMP, JPG, AI etc
Software Character	Integrated Function of Dotting Design, Vector Drawing, Marking, Scribing and Cutting
Voltage	110V~380V/50Hz~60Hz
Cooling Way	Circulation of Water Cooling

## Shipment

Within 20~30 working days after receiving your payment.

## Warranty

Whole machine has a warranty period of 12 months since the production date.

## Training

1~3 working-days training free of charge in factory. Oversea training is available, the buyer can discuss the details with WISELY salesman.



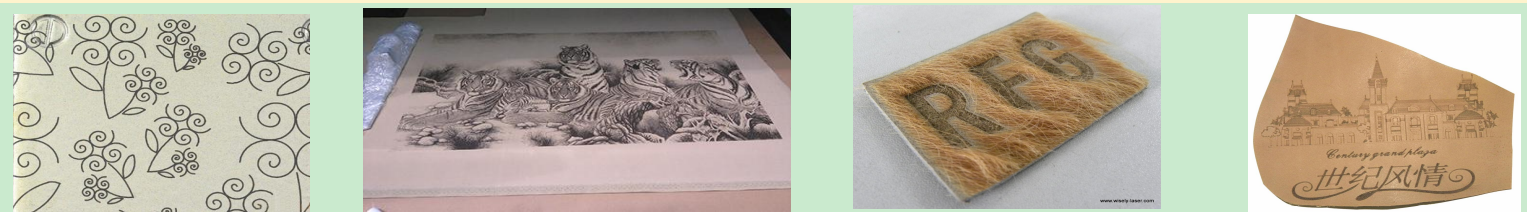
## Sample Gallery



Invitation & Greeting Paper Card



Wood Product



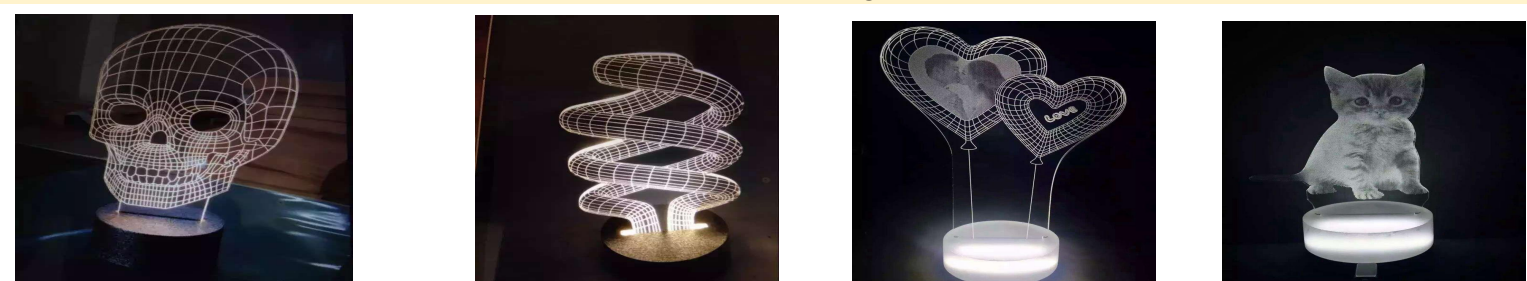
Leather Product



Shoes & Insole



Jeans Laser Processing



LGP Laser Dotting Processing